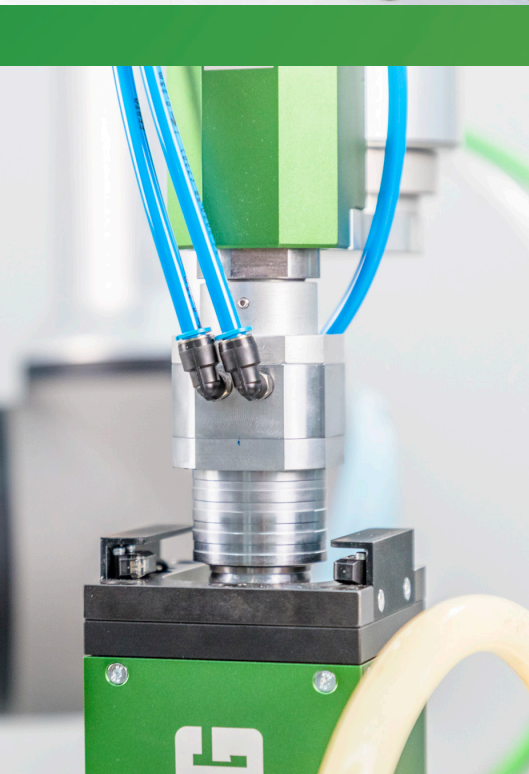


DEPRAG
machines unlimited



TOOL CHANGER



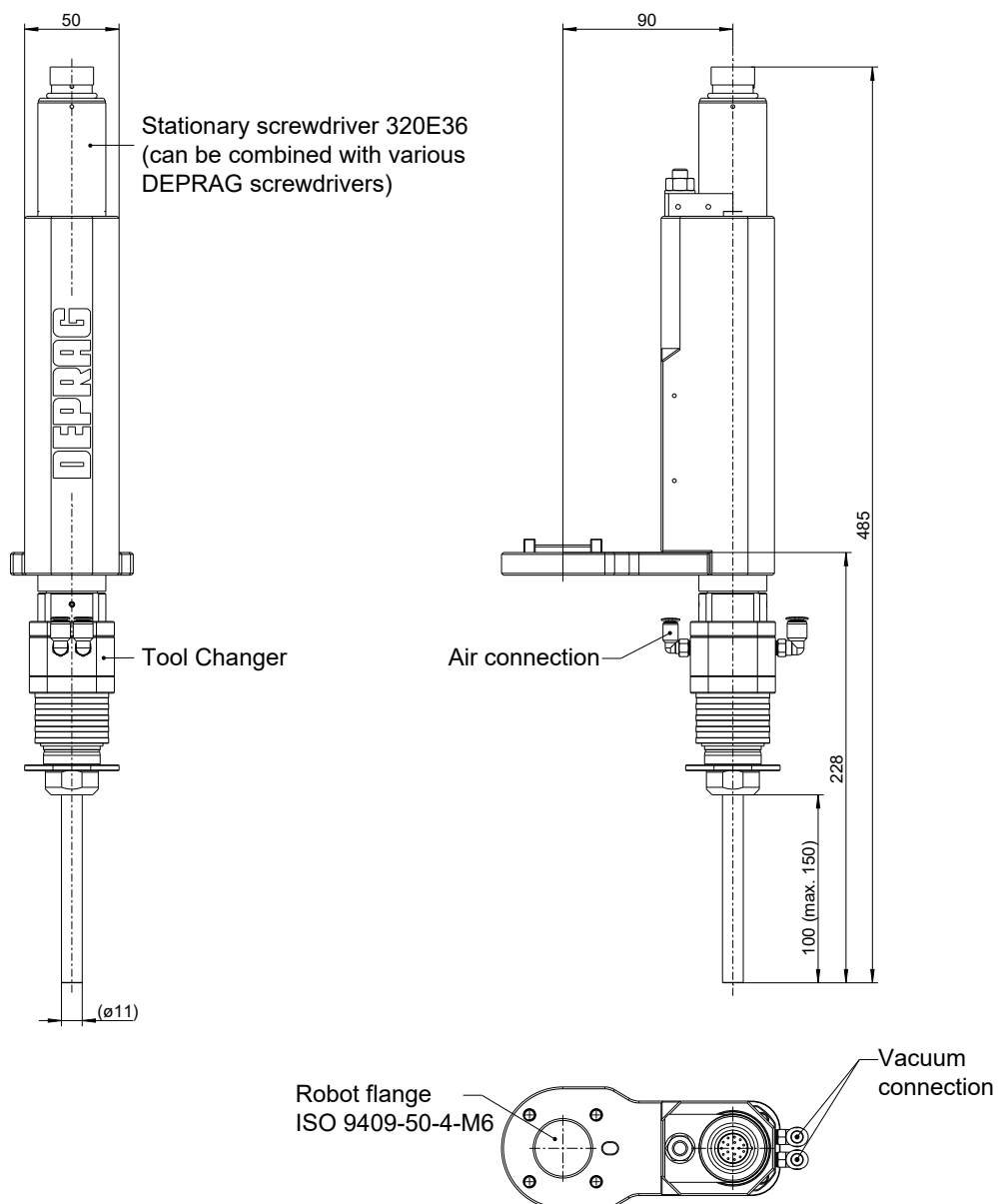
ADVANTAGES

- **A screw assembly system**
for varied fasteners
- **Supply of fasteners**
via feed hose or pick nest
- **Freely adjustable screwdriving system parameters**
torque / angle / speed
- **Automated tool change**
tool 1 and tool 2
- **Fastener pick up**
via vacuum or magnetic socket
- **100% traceability**
due to automatic documentation of process data
- **Modular adaptability**
for any number of tools
- **DEPRAG CleanFeed concept**
Technical cleanliness
- **Easily upgradeable**
A screwdriving system for countless applications!
- **Combine a pick nest**
with all existing feeding systems
- Customer-specific system designs are also available.
Please contact us to discuss the right solution for you!

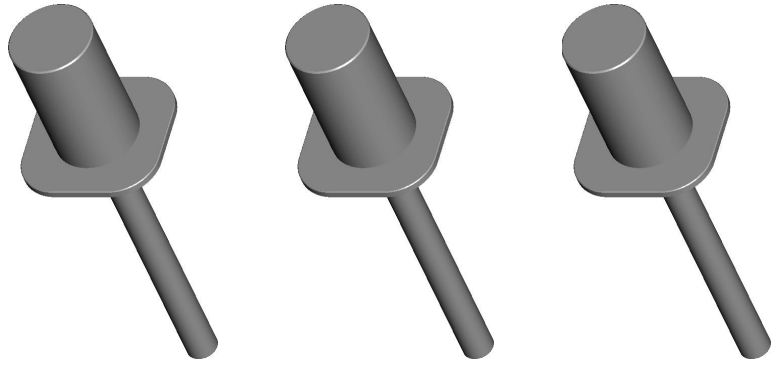
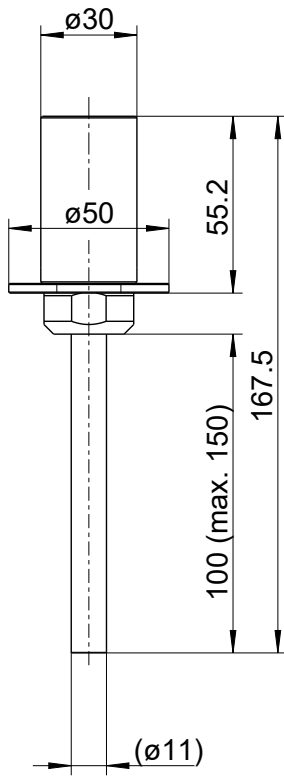
Tool Changer – technical data

| Tool Changer | | |
|---------------------|----|--|
| Screw head-ø max. | mm | 10 |
| Nut max. | | M8 |
| Tool length max. | mm | 150 |
| P&P method | | vacuum / magnet / clamping jaws |
| Screw provider | | pick nest directly in feeding system / external pick nest connected to feeding system via hose |
| Robot flange radius | mm | 90 |
| Tool weight | kg | ~ 0.3 (depending on the tool size) |
| Tool changer weight | kg | ~ 2 (depending on the screwdriver type) |
| Torque max. | Nm | 25 |
| Screwdriver type | | all available DEPRAG screwdriver spindles up to 25 Nm |
| Feeding system | | step feeder, sword feeder, vibratory bowl feeder |

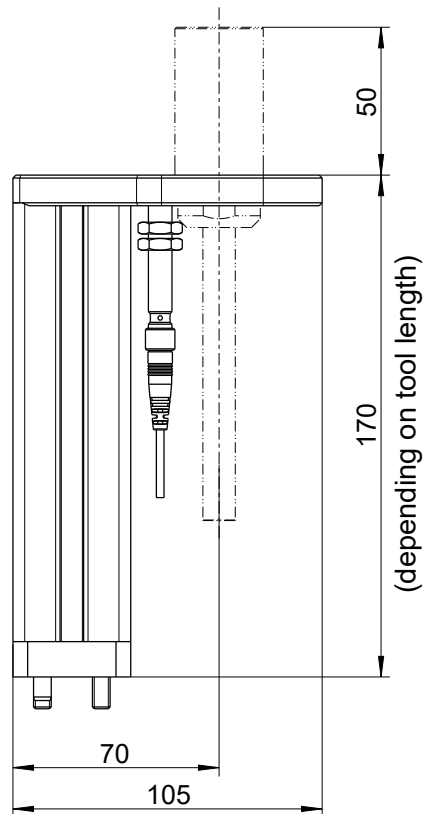
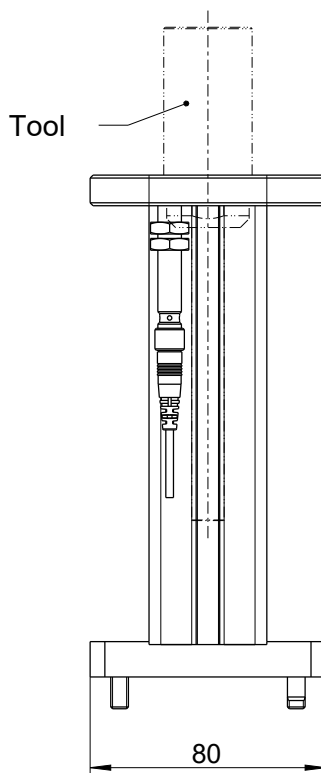
Tool Changer – dimensions



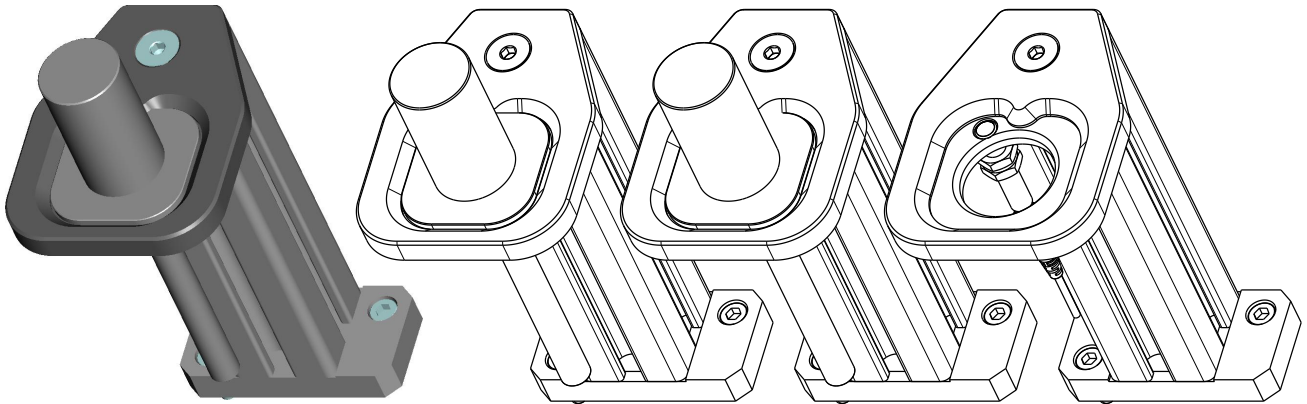
Tool – dimensions



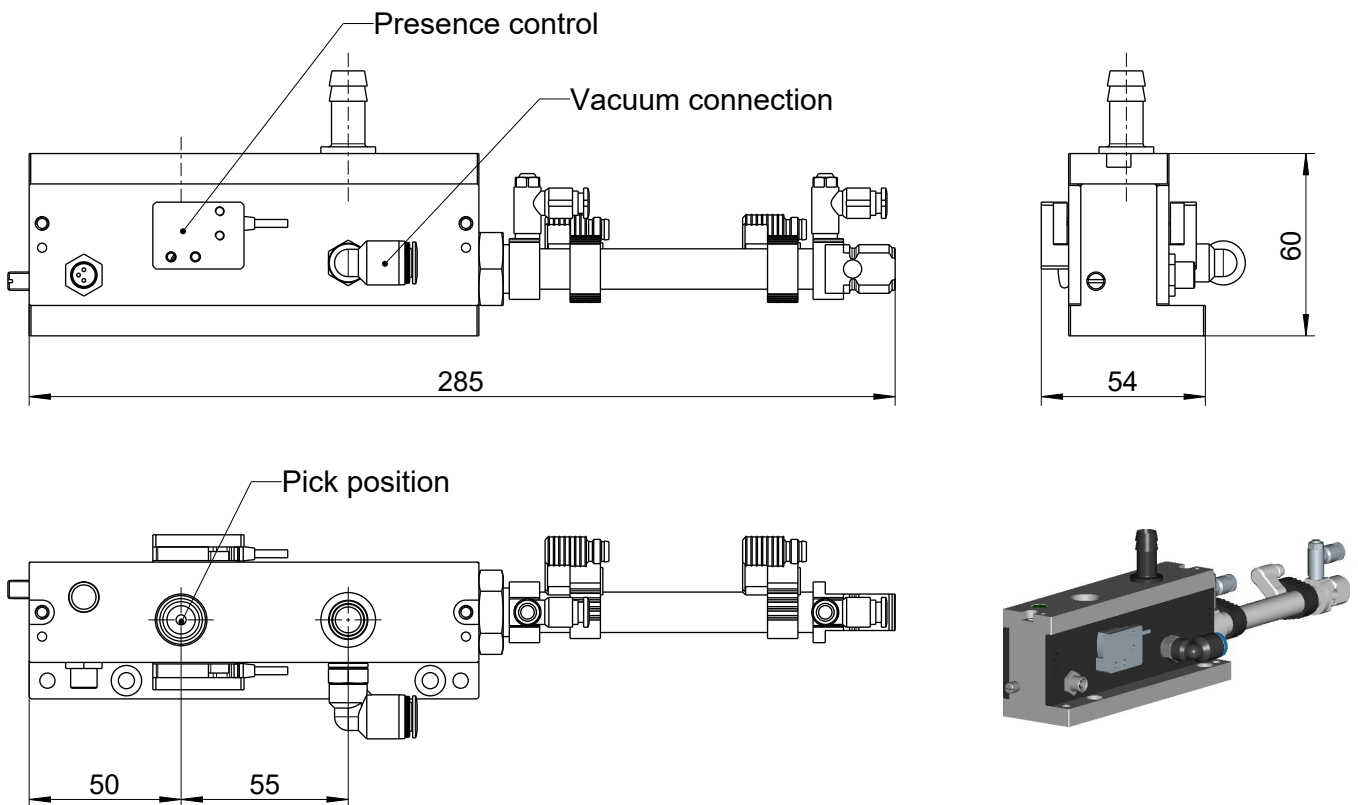
Toolbox – dimensions



Toolbox



Pick nest – dimensions



Complete system





DEPRAG

DEPRAG SCHULZ GMBH u. CO.

P.O. Box 1352, D-92203 Amberg, Germany

Carl-Schulz-Platz 1, D-92224 Amberg

Phone (+49) 9621 371-0, Fax (+49) 9621 371-120

www.deprag.com

info@deprag.de

D0067E | 05.2022